

REGISTER NOW!
2016-2017
LESSONS AND CLASSES

rhapsody
ARTS CENTER
1031 North Edge Tr.
Verona, WI 53593
608.848.2045
www.rhapsodyarts.org

2016-2017 Do Something Creative Everyday.



rhapsody
ARTS CENTER

Music & Art Lessons
Music Classes
Music Therapy
How to Register

MUSIC CLASSES

Like us on **Facebook** to receive reminders, special offers, photos, and more!

Early Childhood (3 mos - 6yrs)

Babies Music (3-18 mos, with caregiver)

Participating in music enhances bonding between baby and caregiver while encouraging the discovery of sounds, movement, and textures. Watch as your child's language skills increase through singing and vocal play.

Wednesdays 10-10:30am **\$70/8 weeks**

SESSION 1: September 14th– November 2nd

SESSION 2: February 1st– March 22nd

SESSION 3: April 5th– May 31st No class April 12th

Instructor: Julie Mazer

Toddler Tunes (18mos-3yrs, with caregiver)

Repetition of familiar tunes, dances, and books stimulates the toddler's musical learning. By absorbing new melodies and predicting the movements that will accompany them, young children are more easily able to soothe themselves and develop critical listening skills. Come share this time with your toddler while singing and dancing to your favorite songs and learning new ones as well.

Wednesdays 10:45-11:30am **\$95/8 weeks**

SESSION 1: September 14th– November 2nd

SESSION 2: February 1st– March 22nd

SESSION 3: April 5th– May 31st No class April 12th

Instructor: Julie Mazer

Family Music (18mos-5yrs, with caregiver)

Join together for songs, movement, and instrument play. This class is perfect for families with multiple children. Activities will be adapted so that everyone can participate together.

Wednesdays 9:15-9:45am **\$80 for up to 2 children**

SESSION 1: September 14th– November 2nd (each additional child \$30)

SESSION 2: February 1st– March 22nd

SESSION 3: April 5th– May 31st No class April 12th

Instructor: Julie Mazer



Little Ones Music (0-2yrs, with caregiver)

Help nurture your baby's musical development. Caregivers take part in this class through play, song, and laughter.

Mondays 5:30-6:00pm **\$68/8 weeks**

SESSION 1: September 12th– November 7th No class October 31st

Instructor: Melissa Ludois

It's Music Time! (2-5yrs, with caregiver)

Release some musical energy with your child while singing, dancing, playing instruments, and more! Along with familiar favorites, this class uses folk songs from all over the world.

Mondays 6:15-7:00pm **\$90/8 weeks**

SESSION 1: September 12th– November 7th No class October 31st

Instructor: Melissa Ludois

Kids N Keys (4-6yrs)

This popular class engages children in singing folk songs, learning to play simple instruments and early keyboard skills. Pre-reading exercises are focused on learning to recognize musical symbols and writing simple music notation. This class is a good introduction to private piano lessons or to our Beginning Piano class. Method book included.

Wednesdays 4-4:45pm **\$175/10 weeks**

SESSION 1*: September 14th– November 16th

SESSION 2: January 11th– March 15th

***Session one and two are not cumulative. Students who complete one session of Kids N Keys usually advance to partner or private piano lessons.**

Instructor: TBA

School Age (6-18yrs)

Beginning Piano (6-8yrs & 9-11yrs)

This ten-week class is perfect for the student with an interest in the piano and the parent with reservations about their child's commitment to the study. No prior experience needed—we start with the basics! Teaching methods are tailored to match the developmental stages of each age group.

Throughout the course, students participate in musical games, rhythm drills, learn musicianship, and develop ear training skills to assist them in learning musical concepts. Students must have access to a piano for practice and to complete class assignments. Method book included.

6-8yrs: Tuesdays 4-4:45pm **\$200/10 weeks**

SESSION 1*: September 13th– November 15th

SESSION 2: January 10th– March 14th

9-11yrs: Tuesdays 5-5:45pm **\$200/10 weeks**

SESSION 1*: September 13th– November 15th

SESSION 2: January 10th– March 14th

***Sessions one and two are not cumulative. Students who complete one session of Beginning Piano usually advance to partner or private piano lessons.**

Instructor: TBA

How to Register:

Call: (608) 848-2045

Online: rhapsodyarts.org

In person: 1031 North Edge Trail, in Verona

Please call if you have questions!

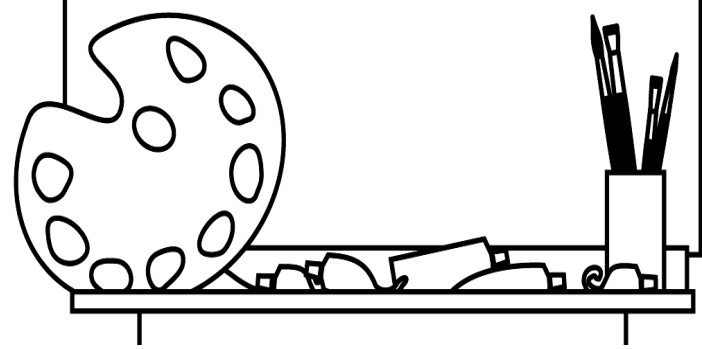
We accept Visa, Mastercard, Discover, Checks, and exact cash only.



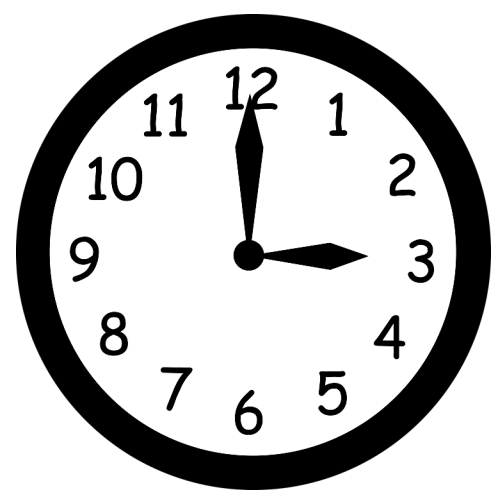
Private Art Instruction with Lindsey or Ruth

Instruction available in a variety of art media. Most materials provided. Please call (608)848-2045 for information about instructors, scheduling availability and fees.

**Available in 45 or 60 min sessions.
Contact us for more information!**



INSANELY BUSY



Adult or High School Teen Music Lesson Package

12 music lessons, 6 months
Flexible schedule.

Learn. Create. Explore. Express.



Who we are: Rhapsody Arts Center is a non-profit community arts school serving the communities of Verona, Fitchburg, West Madison, and others in the Dane County area.

Our Mission: Rhapsody Arts Center believes: The Arts enrich, enhance, revive, and restore minds and hearts. Arts Education offers balance, discipline, creativity, empathy, and imagination. Quality instructors inspire children and adults to experience all the Arts have to offer. Everyone in our community—all ages, professions, and walks of life—benefits from the Arts.

Scholarships: It is our intent that every student is able to study the arts regardless of financial challenges. Our scholarship program provides financial assistance to students who are unable to pay full tuition. If you are in need of a scholarship, please stop by our office or visit our website to obtain a scholarship application. Scholarship applications are due August 3 for the academic year and May 1 for the summer term.

Donate/Volunteer: We welcome you to join with us in supporting the arts by funding lessons and classes for low-income and at-risk students in our area. For information about donating money, time, or needed items, visit the "Get Involved" page on our website, or contact Leo Van Asten, Executive Director, at leo@rhapsodyarts.org.

Policies: Full 2016-2017 studio policies for lessons and classes can be found on our website or at the studio. Rhapsody's academic year studio calendar can also be found at: www.rhapsodyarts.org.

Contact us: Call (608) 848-2045 or email info@rhapsodyarts.org. Our administrative team is generally available Monday through Friday 10am-5pm. Please check our website for current office hours.

Private/Partner Lessons

Private lessons are available for most instruments. We also offer private instruction in composition, improvisation and electronic music production. Lessons take place once a week at a regularly scheduled time and include 40 or 55 minutes of formal instruction. We also set aside 5 additional minutes for parent conference time. Priority scheduling is given to current students and enrollments received before August 1. Enrollment is ongoing and tuition is prorated for a mid-year start.

Partner lessons are available for most instruments and all ages. A partner lesson consists of two students and one instructor meeting once weekly for 40 minutes.

Policies

Rhapsody's private lesson term runs from September 6 through June 2 and the commitment is for the entire academic year. Lesson absence can be excused if the instructor is given at least 24 hours notice. Excused lessons can be made up and students are allowed 2 excused lessons over the 35 week period. In partner lessons, individual student absences will not be prorated or made up. A full list of lesson and class policies is available on our website (rhapsodyarts.org) and at the studio.

Group Lesson Weeks

During Group Lesson weeks, there are no private lessons. Students instead attend music appreciation/history classes, guest lecture/performances, and age/level-appropriate studio classes. Group Lesson classes are 60 minutes with 4-10 students per class. See studio calendar for dates. Group Lesson Weeks are a mandatory supplement to private and partner lessons and are included in tuition.

Tuition & Fees

Tuition includes 30 private lessons and 5 Group Lesson Weeks from September 6, 2016, through June 5, 2017. Tuition is due upon registration in August, November 1, and February 1. If payment is late, a \$10 late fee will be charged.

Registration Fee—A \$40 non-refundable annual registration fee per household is payable at the time of enrollment. This fee covers all partner and private enrollments at Rhapsody through July 2017. This reserves your spot in the studio and helps cover the cost of studio events, festival opportunities, instrument maintenance, and administration.

Book Deposit—All students pay a \$40 book deposit upon registration. Returning students pay a \$20 book deposit. This is a service Rhapsody offers to ensure that students get the correct sheet music they need when they need it. When the \$40 is depleted, a copy of the expense record is provided and another \$40 is due.

Tuition payments due: upon registration in August, Nov 1, and Feb 1. Summer registration and tuition due May 1, 2017.

40 Minute Lessons	(Basic / Master*)
Individual payment (1 of 3)	\$410 / \$480
55 Minute Lessons	
Individual payment (1 of 3)	\$530 / \$625
40 Minute Partner Lessons	
Individual payment (1 of 3)	\$230 / student
40 Minute Insanely Busy Adult	
Tuition per 12 lessons	\$450 / \$510
40 Minute Insanely Busy Teen	
Tuition per 12 lessons	\$450 / \$510

*see website for list of Master level teachers

Our Mission:

Rhapsody Arts Center believes: The Arts enrich, enhance, revive, and restore minds and hearts. Arts Education offers balance, discipline, creativity, empathy, and imagination. Quality instructors inspire children and adults to experience all the Arts have to offer. Everyone in our community— all ages, professions, and walks of life— benefits from the Arts.

Insanely Busy High School Teen Package

We know you have a lot going on! Are you interested in a fun way to improve your brain power? It doesn't matter if you played when you were young, or have not yet played an instrument- music study can benefit all. Do it for your future!

Insanely Busy Adult Package

Do you have a "midlife list" of things you want to learn, see, and do? It's time to take those music lessons you've always wanted, explore your hidden potential, realize your dream of sitting down to play for your own enjoyment. Do it for yourself!

Payment Plans & Discounts

Alternate Payment Plans

Please inquire if you prefer an alternate payment plan (forms available in the office). **Requires scheduled credit card transactions.**

- Credit card payments: 6 payments (Aug, Oct, Dec, Jan, Mar, May)
- There is an additional one-time convenience fee of \$15 per form submitted for credit card payment plan.

Discounts

- 5% discount on total tuition amount if the entire academic year is paid in full by check or cash by August 5
- 10% tuition discount for the third student per household (discount applies to tuition of equal or lesser value).
- 10% tuition discount on second instrument tuition of equal or lesser value (same student only).

Referrals

- Refer a new family and both families receive a \$15 credit (referral information must be provided during registration) Private lessons only.

Music Therapy

Who benefits from music therapy? Anyone who has therapeutic needs in the areas of social, emotional, cognitive, language, sensory, and motor development will benefit from music therapy. Some disability areas may include: autism spectrum, physical disabilities, vision/hearing loss, emotional/behavioral needs, and developmental delays. Rhapsody's music therapist is music therapy board certified (MT-BC).

Private Sessions—Client meets with therapist each week. Sessions consist of goal-related music activities such as instrument play/learning, singing songs, movement songs, song writing, improvisation and much more. 30 and 45 minute sessions are available.

Adaptive Lessons—We offer adaptive music lessons for students with special needs whose primary desire is to learn an instrument. Adaptive lessons are available in piano, guitar, and voice. 40, or 55 minute sessions are available.

Policies—Please inquire with our music therapist for policies specific to our music therapy clients.

Therapy Assessment

(required before private sessions commence)

One 60 minute session \$145

Therapy Sessions

30/45 minute sessions \$55/\$75

Adaptive Lessons

40/55 minute sessions

Individual payment (1 of 3) \$535/\$710

Due upon registration in August,

November 1 and February 1

Rhapsody is a non-profit community school of the arts.

Thank you!

We greatly appreciate those families who support our programs and generously donate extra funds whenever possible, in any amount. We realize you have a choice in your arts instruction, and your enrollment today means a great deal to us and our impact in our community. Thank you.